

**SODI**  
SON DINH GROUP CO., LTD

# SON DINH GROUP

Logistics & Trade Solutions for Businesses  
in Vietnam



Our website:  
**sondinhgroup.com**



Presented By:  
**Ms. Giang**





# About Us

SON DINH GROUP operates in import–export, logistics, and trade, offering professional, transparent, and tailored solutions for businesses in Vietnam with over 10 years of experience.

<https://sondinhgroup.com>



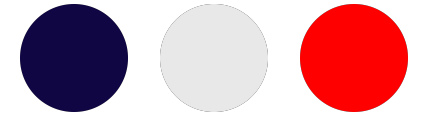
**Deep understanding of  
import–export legal  
procedures**



**Multi-service  
capabilities: customs  
– logistics –  
transportation – trade**



**Experienced and  
knowledgeable  
professional team**



# VISION & MISSION



## VISION

To become a trusted logistics and trade partner for businesses in Vietnam, delivering consistent service quality and flexible capability.



## MISSION

To provide accurate, compliant, and cost-optimized logistics & trade solutions, helping businesses shorten lead times and reduce risks across the supply chain.

# SODI's Role in the Supply Chain



## Common challenges businesses face:

- Complicated procedures, licenses, and inspections
- Fluctuating logistics costs, difficult to control
- Delays impacting delivery timelines



## SODI provides:

- Legally compliant & transparent services
- Optimized logistics cost solutions
- Capability to handle complex documentation
- Support to ensure business timelines are met



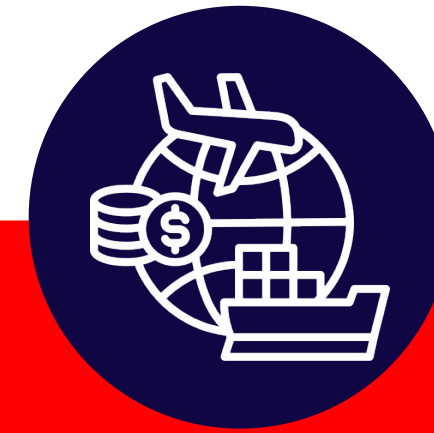
# CORE COMPETENCIES

**SODI offers two main service categories**



## LOGISTICS

- Licensed customs brokerage
- Integrated logistics solutions
- Sea – air – domestic transportation
- Packaging – loading – warehousing

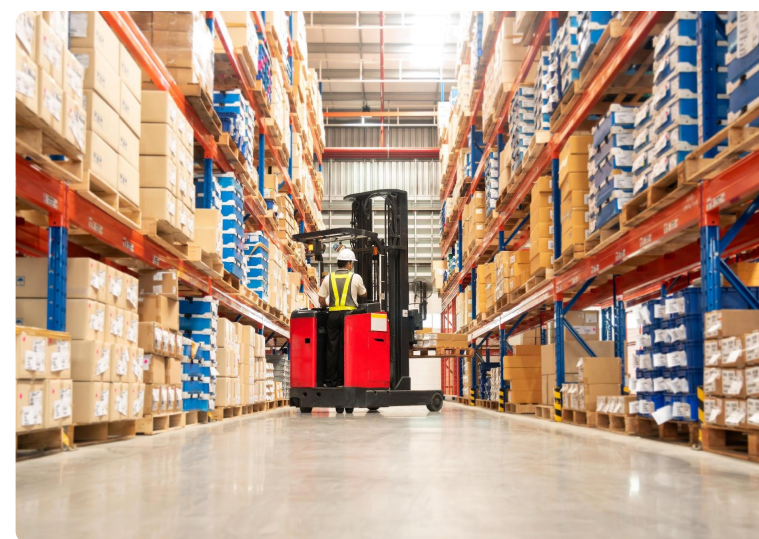


## TRADE

- Sourcing – quality control – documentation
- Support for international transactions & distribution



# LOGISTICS







# CUSTOMS BROKERAGE & COMPLIANCE SERVICES

## **Licensed Customs Brokerage**

Handle customs procedures on behalf of clients

## **HS Code & Tax Consultation**

Determine HS codes, tax rates, and legal requirements

## **Handling Complex Requirements**

Manage certifications, inspections, quarantine, fumigation

## **Document Preparation & C/O Support**

Prepare commercial dossiers, C/O, and related permits

## **Tax Payment & Cost Handling**

Support tax payment, tax refund, and third-party costs

## **End-to-end Logistics Connection**

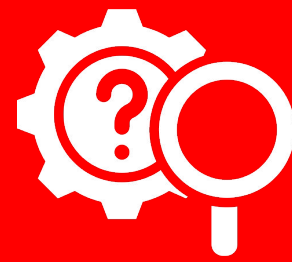
Link customs clearance with transport, warehousing, and delivery

# INTEGRATED LOGISTICS SOLUTIONS

SODI designs tailored logistics solutions for each business



Standardizing  
processes to optimize  
operations



Risk assessment &  
prevention planning



Standardized commercial  
documentation &  
regulatory permits



Transparent cargo flow  
with end-to-end  
tracking



Cost analysis to enhance  
competitiveness



Multi-modal transport  
(sea – road – river) +  
domestic services



# SEA FREIGHT

- FCL – full container load
- LCL – less-than-container load
- Reefer containers (RF)
- Domestic transport for FCL & LCL
- Strong carrier relationships → stable rates & space



# AIR FREIGHT

- International air cargo services
- Competitive rates, timely shipment tracking
- Strong partnerships with major airlines



# DOMESTIC TRANSPORTATION & PACKAGING

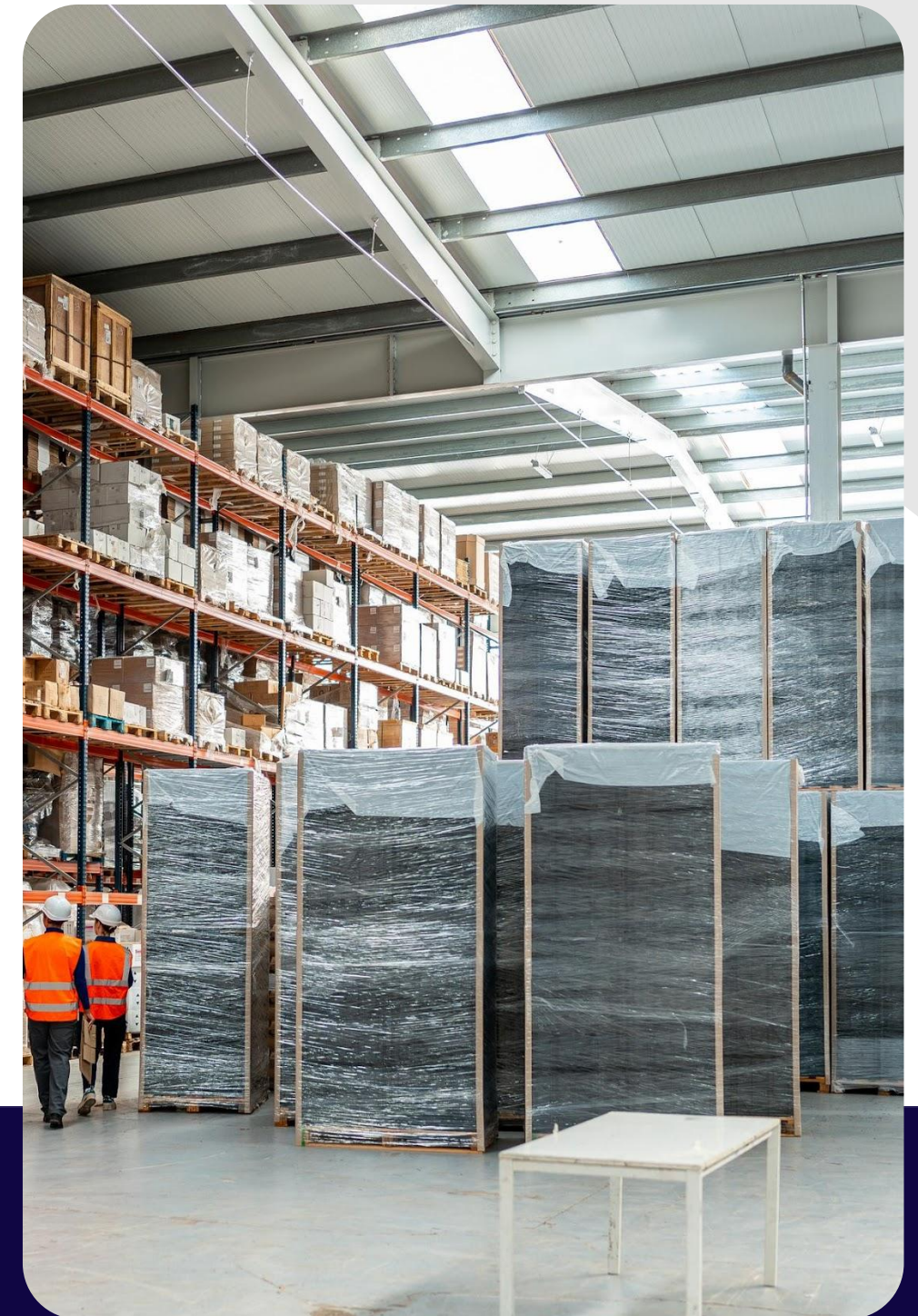
- Nationwide domestic transport partners
- Multi-modal: railway – road – river
- 24/7 services with on-time pickup & delivery
- Packaging, labeling, stamping, loading per regulations
- Door-to-door delivery on request





# LOGISTICS SUPPORT SERVICES

- Packaging solutions to protect goods during transport
- Warehousing & storage management
- Picking, loading/unloading, weighing, sampling
- Fumigation & cleaning services per standards







# TRADE SERVICES



## **SODI provides a wide range of trade services:**

- Cargo handling
- Receiving & dispatching transport documents & bills of lading
- Customs agency
- Sea & air freight agency
- Packaging, unloading, sampling, weighing

## **Additional registered business sectors:**

- Wholesale of general goods
- Wholesale of household items & electronics
- Other related sectors (per listed codes on the website)



# WHY

## CHOOSE SODI?

Reasons SODI is a trusted logistics & trade partner:



**Licensed customs  
brokerage**



**Expertise in import –  
export legal procedures**



**Standardized &  
customized logistics  
solutions**



**Multi-modal transport:  
sea – air – domestic**



**Comprehensive  
support: packaging –  
warehousing – delivery**



**Commercial document  
management & CO/CQ  
assistance**

**SODI**  
SON DINH GROUP Co., LTD

# ELEVATE BUSINESS OPERATIONS

**CONNECT WITH SODI GROUP**

Phone:

**091-429-5765**

Website:

**sondinhgroup.com**

Email:

**rosa-nguyen@sondinhgroup.com**  
**sodi-nguyen@sondinhgroup.com**

Address:

**580 Truong Chinh Street, Tan Binh Ward, HCMC**

